

Appendix 8

1 AICTE File No. F.No. 770-229--(E)/RC/94

Date & Period of last approval

2 Name of the Institution: Manipal Instituite of Technology

Address of the Institution : Manipal
 Udupi District
 City & Pin Code Manipal- 576104
 State / UT Karnataka
 Longitude & Latitude 74 DEGREE 46 mins 60
 Phone number with STD code 0820-2571060
 FAX number with STD code 0820-2571071
 Office hours at the Institution 9AM to 5 PM
 Academic hours at the Institution 8 AM to 5PM
 Email office.mit@manipal.edu
 Website www.manipal.edu
 Nearest Railway Station(dist in Km) Udupi-3Kms
 Nearest Airport (dist in Km) Bajpe-50kms

3 Type of Institution Deemed University
 Category (1) of the Institution Non Minority / Minority specify minority : Non Minority
 Category (2) of the Institution Co-Ed / Women only Co-Ed

4 Name of the organization running the Institution

Type of the organization Society / Trust / PPP
Trust
Address of the organization Manipal Academy of Higher Education Trust
Registered with Office of the Subregistrar, Udupi
Registration date 5/22/1993
Website of the organization www.manipal.edu

5 Name of the affiliating University . Manipal University

Address Manipal.edu, Madhavanagar, Manipal, 576104, Karnataka.
Website www.manipal.edu
Latest affiliation period

6 Name of Principal / Director Dr. Kumkum Garg

Exact Designation DIRECTOR
Phone number with STD code 0820-2571079, 2924012
FAX number with STD code 0820-2571071
Email kumkum.garg@manipal.edu, director.mit@manipal.edu
Highest Degree Ph.D
Field of specialization Distributed Systems

7 Governing Board Members

Give details of all members with their educational qualifications and other credentials

Frequency of meeting: Quaterly. Last meeting held on 9/12/2010

Dr Ramdas M Pai, Chancellor, Manipal University, Manipal

Nominee of Govt. of India, Reply from GOI awaited

Mr Suresh P Prabhu, B-21, Sadhana, 16th Road, Khar (W), Mumbai-400052

Dr V A Pai Panandikar, Panandikar Chambers, M L Furtado Road, Madgaon, Goa - 403601

Dr Ranjan R Pai, CEO, MEMGII, Manipal Towers, 14, Airport Road, HAL II stage, Kodihalli, Bangalore

Mr T V R Shenoy, A-35, South Extension Part II, New Delhi – 110049, New Delhi

Dr. Kumkum Garg, Director, Manipal Institute of Technology, Manipal-576104

Mr. P Dayanand Pai, Managing Director, Century Building Industries P) Ltd, No. 10/1 "laxminarayana Complex" Palace Road, bangalore-560002

Dr M V Kamath, Q NO.234, KMC Quarters, Madhav Nagar, Manipal - 576104

Mr T V Mohandas Pai, Director, Human Resource, Infosys Technologies Ltd, Electronic City, Hosur Road, Bangalore

Maj. Gen. (Retd) Dr G Rajgopal, Dean, Kasturba Medical College, Mangalore

Dr H S Ballal, Pro Chancellor, Manipal University, Manipal - 576104

Dr Ramnarayan, Vice chancellor , Member Secretary, Manipal University, Manipal - 576104

Dr N Udupa, Principal, MCOPS, Manipal

Dr G K Prabhu, Registrar, Manipal University, Manipall

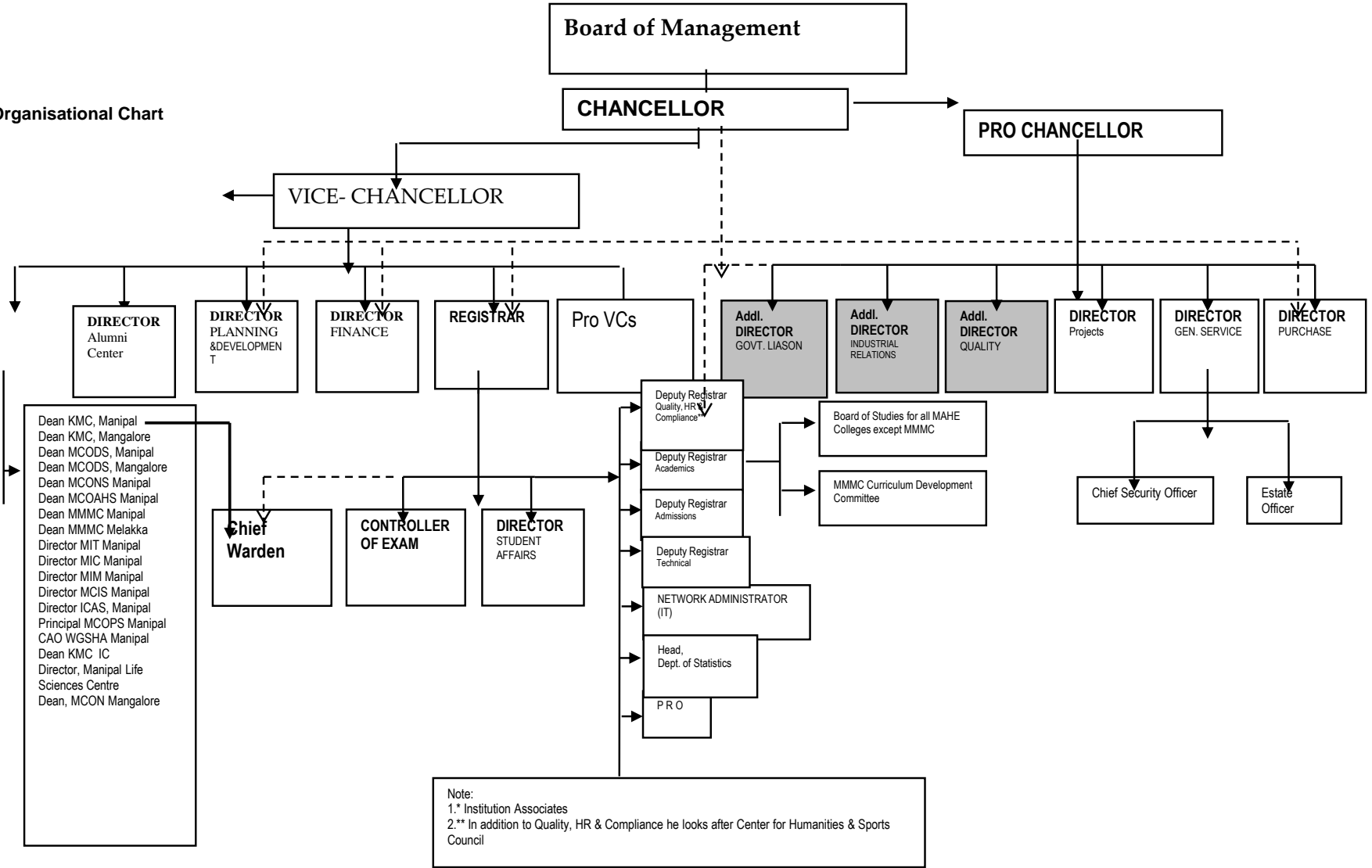
8 Academic Advisory Body

Frequency of meetings & date of last meeting :Once in Three months, 27th November 2010

1. Dr S Ramanand Shetty, Vice-Chancellor, Rajiv Gandhi University of Health Sciences, 4th “T” Block, Jayanagar Bangalore - 560041
2. Dr (Mrs) Renu Batra, Joint Secretary, UGC, Bahadur Shah Zafar Marg, New Delhi – 110 002
3. Mr M D Nalapat, U 26, C/8, DLF Qutab Enclave Phase – 3, Gurgaon – 122 002
4. Dr Vasanth Kumar S, Registrar, Rajiv Gandhi University of Health Sciences, 4th “T” Block, Jayanagar Bangalore – 560041
5. Dr S Ganesan, Scientific Officer, BARC, Central Complex, Trombay, Mumbai -400 085
6. Dr J P Singh, Member Secretary, RCI, B-22 Qutub Institutional Area, New Delhi – 110 016
7. Dr Sandeep Sancheti, Director, NITK, P O Srinivas Nagar, Surathkal - 575025
8. Dr H Sudarshan Ballal, Director, MINU, Manipal Hospital, Airport Road, Bangalore - 560017
9. Dr (Brig) S S Pabla, Vice Chancellor, SMU, Gangtok, Sikkim – 737 102
10. Dr Tejinder Singh, Professor of Pediatrics & Vice Principal – UG Studies, Christian Medical College, Brown Road, Ludhiana, Punjab – 141 008
11. Dr Mathew J Manimala, Prof, Indian Institute of Management, Bannerghatta Road, Sundar Ram Shetty Nagar, Bilekahalli, Bangalore -560076
12. Dr H S Ballal, Pro Chancellor, MU, Manipal
13. Dr K Ramnarayan, Vice-Chancellor, MU, Manipal
14. Dr H Vinod Bhat, Pro Vice-Chancellor, MU, Manipal
15. Dr G K Prabhu, Registrar, MU, Manipal
16. Dr H N Udayashankar, Registrar - Evaluation, MU, Manipal
17. Dr P L N G Rao, Director (Quality & Compliance), MU, Manipal
18. Dr Ranjini Kudva, Dy. Registrar (Academics), MU, Manipal
19. Dr C S Adiga, Dy. Registrar (Technical), MU, Manipal
20. Dr P G Shivananda, Chair, Microbiology, MU, Manipal
21. Dr Sripathi Rao, Dean, KMC, Manipal
22. Dr (Maj Gen) G Rajagopal, Dean, KMC, Mangalore
23. Dr Kumkum Garg, Director, MIT, Manipal
24. Dr N Udupa, Principal, MCOPS, Manipal
25. Mrs P Gopalakrishnan, Principal, WGSMA, Manipal
26. Dr Nirmala Rao, Dean, MCODES, Manipal

27. Dr V Surendra Shetty, Dean, MCOADS, Mangalore
28. Dr Anice George, Dean, MCON, Manipal
29. Dr G M J Bhat, Director, ICAS, Manipal
30. Dr Ullas Kamath, Dean, MMMC, Manipal
31. Mr Varadesh Hiregange, I/C Director, MIC, Manipal
32. Dr B Rajashekhar, Dean, MCOAHS, Manipal
33. Prof Harishchandra Hebbar, Offg. Director, MCIS, Manipal
34. Prof P Ramakrishna Chadaga, Director, MIM, Manipal
35. Dr Poornima Baliga, Dean, KMC International Centre, Manipal
36. Prof (Col) M M Shanbhag, Director, MIJM, Manipal
37. Dr K Satyamoorthy, Director, MLSC, Manipal
38. Dr Christopher Sudhaker, Dean, MCON, Mangalore
39. Ms Saroja Jayakumar, Dean, MCON, Bangalore
40. Dr Pawan Kumar Gupta, Dean, MIRM, Bangalore
41. Dr B Ramjee, Director, Manipal University-Dubai Campus, Block No 7, Dubai International Academic City, P O Box No 345050, Dubai
42. Dr Jaspal Singh Sahota, Dean, Melaka-Manipal Medical College, JVMC Corporation Sdn. Bhd, Jalan Batu Hampar, Bukit Baru, 75150, Melaka, Malaysia

9 Organisational Chart



10 Student feedback mechanism on Institutional Governance/faculty performance The Institute adopts a student feed back system. In this system each faculty is evaluated by each student at the end of each semester. The faculty is evaluated through 10 questionnaires each carrying 5 points each. Thus the total point is 50. The questions are framed to judge the teaching, knowledge, punctuality, sincerity, and leadership skills. The points obtained by each faculty is made known to the faculty and this gives an opportunity to every faculty to improve the area in which he is weak as judged by the student. The Institute has recently started the student feed back system through on line to maintain Confidentiality.

11 Grievance redressal mechanism for faculty, staff and students For faculty and staff and for Students the Institute has separate grievance committees in the Institute headed by Joint. Director as the Chairman and three Senior faculty as the members. Faculty, staff and Students can report their grievances to the Chairman and it will be discussed in the committee for necessary actions. The Institute has a student welfare office headed by Associate Director (Student Welfare). Students can report their grievances to this office also. There is a suggestion/grievance box kept in front of office of the Student Welfare. Students will put their grievances if any, in the box. Joint Director will discuss about grievances in the Grievance Committee and action will be taken.

Aeronautical & Automobile Engg

Course: B.E.

UG:

Level

1st Year of approval by the Council :UG:**Year wise Sanctioned Intake**

	2010-2011	2009-2010	2008-2009
UG : Aeronautical Engineering	40	40	40
UG : Automobile Engineering	40	40	40

PG:

Year wise Actual Admissions

	2010-2011	2009-2010	2008-2009
UG : Aeronautical Engineering	51	39	40
UG : Automobile Engineering	49	40	40

PG:

Cut off marks – General quota (RANK IN UGET EXAMINATION)

	2010-2011	2009-2010	2008-2009
UG : Aeronautical Engineering	5280	5138	4652
UG : Automobile Engineering	5024	8888	5006

PG:

% Students passed with Distinction

	2010	2009	2008
UG : First batch yet to pass out	--	--	--

PG:

% Students passed with First Class

	2010	2009	2008
--	------	------	------

UG	--	--	--
PG:	--	--	--
Students Placed	2009-10	2008-09	2007-08
UG :PG	--	--	--
	2009-10	2008-09	2007-08
Average Pay package, Rs./Year	--	--	--
Students opted for Higher Studies	2009-10	2008-09	2007-08
	--	--	--
Accreditation Status of the course			
UG :	--	--	--
PG:	--	--	--
Doctoral Courses	--	--	--
Foreign Collaborations, if any :	--	--	--
Professional Society Memberships :	--	--	--
Professional activities:	--	--	--
Consultancy activities	--	--	--
Grants fetched	--	--	--
Departmental Achievements	--	--	--
Distinguished Alumni	--	--	--

BIOMEDICAL ENGINEERING

Biomedical Engineering, Mamipal Institute of Technology, Manipal.

UG: Admitted under UGET University Examination

PG: Admitted through an University Entrance Examinations.

Level

I Year of approval by the Council UG: No.770-53-229/RC/94 dated April 30, 1995

PG: F:441/KTK-2/BOS(PG)95 dated May 23, 1995.

Year wise Sanctioned Intake	2010-2011	2009-2010	2008-2009
UG:	60	60	60
PG:	25	25	25
Year wise Actual Admissions	2010-2011	2009-2010	2008-2009
UG :	59	66	68
PG:	25	24	11
Cut off marks – General quota	2010-2011	2009-2010	2008-2009
UG :	7428	24097	11429
PG:	91	91	13
% Students passed with Distinction	2010	2009	2008
UG :	81%	78%	89%
PG:	90%	94%	100%
% Students passed with First Class	2010	2009	2008
UG	15%	16%	11%
PG:			
Students Placed	2009-10	2008-09	2007-08
UG	13/34	24/32	18/31
PG			

Average Pay package, Rs./Year	2009-10	2008-09	2007-08
	3.125	3.765	
Students opted for Higher Studies	2009-10	2008-09	2007-08
	4	11	9

Accreditation Status of the course

UG : Accredited 5 years (Period of validity with effect from 16-03-2007)

PG: Accredited 3 years (Period of validity with effect from 16-03-2007)

Doctoral Courses Yes (3 members of our faculty are pursuing Ph.D.)

Foreign Collaborations, if any : Research Collaboration with Concordia University, Montreal, Canada.

Professional Society Memberships : International Electrical & Electronics Engineering (IEEE), Biomedical Engineering Society of India (BMESI), International Society for Technical Education (ISTE), Systems Society of India (SSI), MESI
 Editorship of the Journal BMESI, Reviewer-status with several journals.

Conducting Workshops & Conferences.

Attending Workshops & Conferences.

HQ of BMESI is at the Dept. of Biomedical Engineering

BMESI activities (Seminars, Circuit Design Contest, Short-term Course on MATLAB, etc.)

Professional activities: Attending conferences / workshops.

Chairing Technical sessions at conferences.

Delivering lectures (invited) at conferneces, institutions & other organizations (GE Healthcare).

Training to non-teaching members of the Faculty: Web-page Development Using html, English-speaking course, etc.

Consultancy activities None at the moment

Grants fetched None at the moment, although efforts are on.

Dr. G. K. Prabhu won the prestigious Shyam Lal Saxena Memorial Award for the year 2006-2007, for best published work, in the field of Biomedical Engineering.

Departmental Achievements

Two invention disclosures of Dr. Ramesh R. Galigekere, Professor & Head, were awarded by Intellectual ventures for consideration towards patenting (2009).

Dr. Ramesh R. Galigekere was profiled in the special edition of MARQUIS Who's Who in Science and Engineering, 2007.

Anuradha Swaminathan, II Year M.Tech student in Biomedical Engg. has bagged the "Outstanding Intern" award from Philips Healthcare, Bangalore for her work "Removal of calcification from arteries in coronary CT Angiography 2010

Richa Mishra, II year M.Tech Biomedical Engineering bagged the 1st Prize at AAROHAN 2009 - Inter College Paper Presentation organized by Wipro Technologies, India 2009

Students from the department have bagged entry into several of the top schools in the world. A student bagged the honour "Blue Ribbon" for having been the best outgoing student at the MIT, 2006.

1) Dr. S. Poornachandra (1994-M.Tech, BME) Professor, R.M.K. Engg. College, Chennai - December

2) Dr. N. Sriraam (2000 - M.Tech, BME) Professor, Dept of BME, SSN College of Engg. Chennai, - D

3) Dr. Gopalakrishna Prabhu K (1994- M.Tech, BME) Registrar, Manipal University - December 2008

4) Dr. Rajendra Acharya (1997 M.Tech, BME) visiting faculty, Ngeeann Polytechnic , Singapore- Dec

Distinguished Alumni

BIOTECHNOLOGY

Course: B.E & M.TECH.

UG: Biotechnology

Level

PG: Industrial Biotechnology

1st Year of approval by the Council : UG: Approved in the year April 2006

PG: Yet to be approved

Year wise Sanctioned Intake**2010-2011****2009-2010****2008-2009**

UG:

60

60

40

PG:

18

18

Year wise Actual Admissions**2010-2011****2009-2010****2008-2009**

UG :

67

28

66

PG:

18

18

Cut off marks – General quota**2010-2011****2009-2010****2008-2009**

UG :

6744

17126

7829

PG:

24

20

% Students passed with Distinction**2010****2009****2008**

UG :

9

13

PG:

6

% Students passed with First Class**2010****2009****2008**

UG

32

25.00

PG:

6

Students Placed

	2009-10	2008-09	2007-08
UG :PG	19	25	Nil

Average Pay package, Rs./Year

	2009-10	2008-09	2007-08
	3.6 lakhs p.a.	3.2 lakhs p.a.	---

Students opted for Higher Studies

	2009-10	2008-09	2007-08
	29	24	---

Accreditation Status of the course

UG :	60
PG:	18
Doctoral Courses	---
Foreign Collaborations, if any :	---
Professional Society Memberships :	---
Professional activities:	Conducted National Conference "SYMBOIT 2009" and "SYMBOIT 2010"
Consultancy activities	---
Grants fetched	---
Departmental Achievements	---
Distinguished Alumni	---

Chemical Engineering

Course: BE

UG: Yes

Level

PG:

1st Year of approval by the Council :UG: 19-7-1997

PG: To be approved

Year wise Sanctioned Intake

	2010-2011	2009-2010	2008-2009
UG:	60	60	60
PG:	-	-	-

Year wise Actual Admissions

	2010-2011	2009-2010	2008-2009
UG :	76	70	74
PG:	18	-	-

Cut off marks – General quota

	2010-2011	2009-2010	2008-2009
UG :	5487	11151	5672
PG:	56	-	-

% Students passed with Distinction

	2010	2009	2008
UG :	3	5	6
PG:	-	-	-

% Students passed with First Class

	2010	2009	2008
UG	22	20	25
PG:	-	-	-

Students Placed

	2009-10	2008-09	2007-08
UG :	95%	87%	69%

	2009-10	2008-09	2007-08
--	---------	---------	---------

Average Pay package, Rs./Year

	3.5 Lakh per Year	3 Lakh per Year	2.5 Lakh per year
--	-------------------	-----------------	-------------------

Students opted for Higher Studies

	2009-10	2008-09	2007-08
	03	04	05

Accreditation Status of the course :

UG : Accredited by NBA in 2007 for 5 years

PG: Not Applicable

Doctoral Courses Yes

Foreign Collaborations, if any : Nil

Professional Society Memberships : All the faculty members of IChE and ISTE, SSI etc.

Professional activities: All the students are members of IChE students chapter is functioning

Consultancy activities Testing of fuels, oils, waste water etc.

Grants fetched Nil

Departmental Achievements 1) Accredited for 5 years by AICTE, NBA

2) Started M.Tech Program in Chemical Engg.

1) Dr. Suhas Bhandarkar, Professor in Alfred University, NY. 1975 batch.

Distinguished Alumni 2) Dr. Prakash R.Kota, Chairman & MD, Kerox Chemical Pvt. Ltd, 1989 batch.

3) Shri. P.N. Trivedi, Vice President, Reliance India Ltd., Patalganga, Rasayani, Maharashtra State. 1978 Batch.

CIVIL ENGINEERING

Course:

UG: Bachelor of Engineering - B.E. (Civil)

Level

PG: Master of Technology - M.Tech.

1st Year of approval by the Council :UG:

PG:

Year wise Sanctioned Intake	2010-2011	2009-2010	2008-2009
UG:	60	60	60
PG:			
M.Tech.(Structural Engg)	25	25	25
M.Tech.(Construction Engg & Management)	18	18	18
M.Tech.(Environmental Engg)	18		

Year wise Actual Admissions	2010-2011	2009-2010	2008-2009
UG :	85	72	74
PG:			
M.Tech.(Structural Engg)	25	25	25
M.Tech.(Construction Engg & Management)	18	18	9
M.Tech.(Environmental Engg)	18		

Cut off marks – General quota	2010-2011	2009-2010	2008-2009
UG :	Entrance Test ranking	Entrance Test ranking	Entrance Test ranking
PG:			
M.Tech.(Structural Engg)	Entrance Test ranking	Entrance Test ranking	Entrance Test ranking

M.Tech.(Construction Engg & Management)	Entrance Test ranking	Entrance Test ranking	Entrance Test ranking
M.Tech.(Environmental Engg)	Entrance Test ranking	Entrance Test ranking	Entrance Test ranking
% Students passed with Distinction	2010	2009	2008
UG :	1.59	27.27	14.3
PG:			
M.Tech.(Structural Engg)	30.76	62.5	0
M.Tech.(Construction Engg & Management)	35.71	33.33	40
M.Tech.(Environmental Engg)			
% Students passed with First Class	2010	2009	2008
UG :	65.9	59.09	64.29
PG:			
M.Tech. (Structural Engg.)	61.54	37.5	80
M.Tech.(Construction Engg & Management)	42.85	66.67	40
M.Tech.(Environmental Engg)			
Students Placed	2009-10	2008-09	2007-08
UG :	40	21	30
PG:	13	34	10
Average Pay package, Rs./Year	2009-10	2008-09	2007-08
	3.15 lpa to 3.70 lpa	3 lpa to 3.8 lpa	NA
Students opted for Higher Studies	NA	NA	NA
Accreditation Status of the course	2009-10	2008-09	2007-08

UG :	Accredited for 3 years from 19-07-2007	Accredited for 3 years from 19-07-2007	Accredited for 3 years from 19-07-2007
PG:	Accredited for 3 years from 16-03-2007	Accredited for 3 years from 16-03-2007	Accredited for 3 years from 16-03-2007
Doctoral Courses	-----	----	----
Foreign Collaborations, if any :	No	No	No

Professional Society Memberships : Indian Society of Technical Education, Institution of Engineering, Indian Society of Remote Sensing, Indian Society of Geomatics, Geolocial Society, Minerological Society, Indian Water Works Association, Indian Society of Hydraulics, Indian Water Resources Society, Institute of Valuers - India, Association of Structural Engineers - India, International Association of Geochemistry - Canada, American Geophysical Union - USA, International Medical Geology Association - Sweden, Geological Society of America - USA, Associatiation of Structural Rehabilitation.

Professional activities:

Consultancy activities Departmental consultancy in various fields of civil engineering; testing of concrete cubes, steel rods, geotechnical engineering(SBC), water quality testing, surveying etc. are being taken up.

Grants fetched 1. Ministry of Environment and Forests, Government of India (24.7 lacs) 2. BRNS Department of Automic Energy (41.47 lacs)

Departmental Achievements STTP on Structural Steel Design, Workshop on AutoCAD by IE Civil One day workshop on Rainwater harvesting Awareness workshop on Geoinformatics in the service of community.

Departmental Achievements Celebration of world water day , world environmental day.

Distinguished Alumni Invited Guest lectures by Eminent personalities and practising Engineers on various subjects of Civil Engineering
Every month profiles of two distinguished alumni are published in the university web site

Computer Science & Engineering

Course:
 UG: B.E. (Computer Science & Engineering)
 Level PG: M.Tech. (Computer Science & Engineering)
 PG: M.Tech. (Computer Science & Information Security)
 1st Year of approval by the Council :UG: 1993
 PG Computer Science & Engineering: 1993

PG (Computer Science & Information Security: Pending Approval

	2010-2011	2009-2010	2008-2009
UG:	240	240	240
PG: (CSE)	25	25	25
PG: (CS&IS)	18	xx	xx
Year wise Actual Admissions	2010-2011	2009-2010	2008-2009
UG :	258	223	232
PG (CSE):	25	25	25
PG (CS&IS):	18	XX	XX
Cut off marks – General quota	2010-2011	2009-2010	2008-2009
UG :	3178	3904	2190
PG (CSE):	133	266	166
PG (CS&IS):	257	XX	XX
% Students passed with Distinction	2010	2009	2008
UG :	20.93	21.07	19.39
PG: CSE	61.53	72.72	59,09
% Students passed with First Class	2010	2009	2008

UG	23.25	34.97	32.75
PG: CSE	38.46	27.27	40.9
Students Placed	2009-10	2008-09	2007-08
UG :PG	120	120	120
Average Pay package, Rs./Year	2009-10	2008-09	2007-08
	3.25 lacs	3.5 lacs	3 lacs
Students opted for Higher Studies	2009-10	2008-09	
	Statistics not available	Statistics not available	Statistics not available

Accreditation Status of the course

UG :	Accredited
PG: Computer Science and Engg.	Not Accredited
PG: Computer Science and Information Security	Not eligible yet
Doctoral Courses	Yes(14 ongoing)
Foreign Collaborations, if any :	Nil
Professional Society Memberships :	ISTE
Professional activities:	IE (CSE) Club, Linux Users Group
Consultancy activities	Nil
Grants fetched	Nil
Departmental Achievements	2010: Journal Publications-15 , Publications in Conference Proceedings-17 , Workshops conducted -4. Started a new M.Tech. Computer Science & Information Security
Distinguished Alumni	Distinguished Alumnus profile is published in the Manipal University website every month.

Students Placed	2009-10	2008-09	2007-08
UG:	133	129	118
PG:DEAC	25	25	25
PG:Micro Electronics	18	8	Nil
Average Pay package, Rs./Year	2009-10 4.2 lakh/Yr	2008-09 4.0 lakh/Yr	2007-08 3.3 lakh/ Yr
Students opted for Higher Studies	2009-10 10%	2008-09 7%	2007-08 5%

Accreditation Status of the course

UG :	Accrediated by NBA (3 Years) Approved by AICTE
PG:	Approved by AICTE
Doctoral Courses	Ph.D
Foreign Collaborations, if any :	Nil
Professional Society Memberships :	IEEE: 98, IE: 73
Professional activities:	IEEE, IE
Consultancy activities	Nil
Grants fetched	Research grant from DBT, India National level conference during 2005 & 2007 Internation Conference in associated with IEEE in 2009 National level workshop in 2008
Departmental Achievements	Industry Tieups with EMC2, Philips, Bop Student exchange program through IAESTE 35% of total faculty - pursuing Ph.D
Distinguished Alumni	Nil

ELECTRICAL & ELECTRONICS ENGINEERING

Course: B.E, M. Tech

UG: ELECTRICAL & ELECTRONICS ENGG.

Level

PG: (1) EMAL (2) PESC

1st Year of approval by the Council :UG: F.41-23/92-AICTE/250 dtd 19-7-1993

PG:(1)EMAL - F.441/KTK-2/BOS(PG)/95 dtd23/5/95 (2) PESC-F.770/53/229(E)dtd 9/10/2008

Year wise Sanctioned Intake

	2010-2011	2009-2010	2008-2009
UG:	160	120	120
PG:	(1)18 (2)18	(1)18 (2)18	(1)18 (2)18

Year wise Actual Admissions

	2010-2011	2009-2010	2008-2009
UG:	196	140	143
PG:	(1)18 (2)18	(1)5 (2)16	(1)2 (2)2

Cut off marks* – General quota (* Cutoff Rank)

	2010-2011	2009-2010	2008-2009
UG:	3847	5280	3604
PG:	(1)106 (2)64	(1)39 (2)92	N/A

% Students passed with Distinction

	2010	2009	2008
UG:	19	18	14
PG:	(1)50 (2)50	(1)N/A (2)N/A	(1)N/A (2)N/A

% Students passed with First Class

	2010	2009	2008
UG:	49	59	60
PG:	(1)50 (2)50	(1)N/A (2)N/A	(1)N/A (2)N/A

Students Placed

	2009-10	2008-09	2007-08
UG:	93	115	162
PG:	4	(1)N/A (2)N/A	(1)N/A (2)N/A

	2009-10	2008-09	2007-08
Average Pay package, Rs./Year	3.33L	3.68L	3.20L
Students opted for Higher Studies	2009-10	2008-09	2007-08
	15%	10%	5%

Accreditation Status of the course

UG :	Accredited for 3 years w.e.f 16-03-07, is processing for accreditation
PG:	Under Processing
Doctoral Courses	NA
Foreign Collaborations, if any :	NIL
Professional Society Memberships :	IEEE, IE, ISTE, SSI, ISLE
Professional activities:	Institution Engineers India Student Chapter
Consultancy activities	Lighting photometry consultancy
Grants fetched	DST Funding for Research
	International Conference in 2010
	National level student paper contest & Project Exhibition in Feb 2011
Departmental Achievements	One national conference / year Awarded PhD for 5 Research Scholars Testing & Consultancy
Distinguished Alumni	Industry Institute Interaction Mr. Neeraj Desai(1996-99 batch), AVP of Business Strategy at FINO , Ramdas Patil M., (PG1989-91), Moser Baer India Ltd , Noida

Information & Communication Technology

Course: Engineering

UG:B.E. (Information Technology)

Level

PG: i) Information & Communication Network Engg. ii) M.Tech.(Software Engg.)

1st Year of approval by the Council :UG: (a) 2001

PG: (i) Information & Communication Network Engg. : 2004

(ii) M.Tech. (Software Engg.) : 2007

Year wise Sanctioned Intake	2010-2011	2009-2010	2008-2009
UG:	120	120	120
PG:	18	18	18
Year wise Actual Admissions	2010-2011	2009-2010	2008-2009
UG :	148	127	133
PG: Network Engg.	18	18	17
Software Engg.	18	18	13
Cut off marks – General quota	2010-2011	2009-2010	2008-2009
UG :	4616	8966	3506
PG:	236	216	248
% Students passed with Distinction	2010	2009	2008
UG :	13	17	7
PG: (i) Information & Communication Network Engg.	6	2	3
(ii) Software Engg.	5	1	1
% Students passed with First Class	2010	2009	2008
UG	37	36	47
PG:(i) Information & Communication Network Engg.	14	13	8
(ii) Software Engg.	8		12

Students Placed	2009-10	2008-09	2007-08
UG :PG	UG : 64	UG : 87	UG : 85
Average Pay package, Rs./Year	2009-10	2008-09	2007-08
	3.5 lakhs	4.25 lakhs	4 lakhs
Students opted for Higher Studies	2009-10	2008-09	2007-08
	2	2	4

Accreditation Status of the course

UG :	Accrediated
PG:	***
Doctoral Courses	****

Foreign Collaborations, if any : • Collaboration with TU/e, Eindhoven, for master's programme with ESIGELIC, France for exchange of students for internship & Joint resarch & Publications * Collboration

Professional Society Memberships : EEE, ISTE, SSI

Professional activities: NIL

Consultancy activities NIL

Grants fetched NIL

Departmental Achievements Dr. Manohara Pai M.M., received an award by Honourable Minister of Science & Technology, Mr. Prithviraj Chavan in Delhi on August 28th 2009, for mentoring the innovation indigenou Dental Implants. Dr. Manohara Pai M.M. , Professor , received a grant of Rs. 2.3 crores for TBI from DST, Govt. of India, Dr. Manohara Pai M.M., Professor, received Rs. 66 Lakhs from MSME, Govt. of Inida. Dr. Manohara Pai M.M. , is a Visiting Professor at ESIGELEC, France and TU/e Eindhoven, Netherlands

Distinguished Alumni

Instrumentation & Control Engg

Course: B.E & M.Tech

UG: Instrumentation & Control Engg

Level

PG: Astronomy and Space Engg & Control Systems

1st Year of approval by the Council : UG: june 23 2005

PG: June 23 2005(control system) july 13 2007 (Astronomy and space engg)

Year wise Sanctioned Intake	2010-2011	2009-2010	2008-2009
UG:	60+	60+	60+
PG:	18	18	18
Year wise Actual Admissions	2010-2011	2009-2010	2008-2009
UG :	60	33	63
PG:(i) Control systems , (ii)Astronomy and space engg	17 (15)	15(6)	4(-)
Cut off marks – General quota	2010-2011	2009-2010	2008-2009
UG :	5635	11750	4745
PG:	66(113)	93(-)	(-)
% Students passed with Distinction	2010	2009	2008
UG :	33	6.67	7.21
PG (i) Control systems , (ii)Astronomy and space engg	2 (2)	2	2
% Students passed with First Class	2010	2009	2008
UG	87	93.33	93.23
PG:(i) Control systems , (ii)Astronomy and space engg	16 (5)	5	5
Students Placed	2009-10	2008-09	2007-08
UG :PG	70%	100%	100%

	2009-10	2008-09	2007-08
Average Pay package, Rs./Year	4 lakhs	4 lakhs	4 lakhs
Students opted for Higher Studies	2009-10	2008-09	2007-08
	5%	7%	9%

Accreditation Status of the course

UG :	2008 - 2013
PG:	Nil
Doctoral Courses	Yes
Foreign Collaborations, if any :	Nil
Professional Society Memberships :	IEEE , System Society of India , IE(I)
Professional activities:	Conducting Conferences / Workshops / Publising papers in journals / conferences
Consultancy activities	Yes
Grants fetched	Yes
Departmental Achievements	Internatonal Conference and Journal publications Mr.Brian winston Rego
Distinguished Alumni	Mr.K.Ananth Mr.Apurva singh

MCA**Course: Master of Computer Applications (M.C.A.)**

Level UG: NA
 PG:Level

1st Year of approval by the Council :UG: NA

PG: 1998

Year wise Sanctioned Intake	2010-2011	2009-2010	2008-2009
UG:			
PG:	60	60	60
Year wise Actual Admissions	2010-2011	2009-2010	2008-2009
UG :			
PG:	60	34	57
Cut off marks – General quota	2010-2011	2009-2010	2008-2009
UG :	-	-	-
PG:	182	39	-
% Students passed with Distinction	2010	2009	2008
UG :	-	-	-
PG:	8.47	5.55	
% Students passed with First Class	2010	2009	2008
UG	-	-	-
PG:	59.3	Jan-00	41
Students Placed	2009-10	2008-09	2007-08
UG :PG	10	14	-
	2009-10	2008-09	2007-08
Average Pay package, Rs./Year	2,16,000	2,16,000	2,16,000
Students opted for Higher Studies	2009-10	2008-09	2007-08
	1	-	-

Accreditation Status of the course

UG : NA

PG: NA

Doctoral Courses NIL

Foreign Collaborations, if any : NIL

Professional Society Memberships : **ISTE**

Professional activities: NIL

Consultancy activities NIL

Grants fetched NIL

Departmental Achievements NIL

Distinguished Alumni

- 1. Nagajuna Reddy (2007-10)
- 2. Amith Nambiar and Simith Nambiar (1999 - 2002)
- 3. Nitin Kumar Agarwal (2004-07)

Mechanical and Manufacturing Engineering

Course:

UG:1) Mechanical Engineering 2) Industrial & Production Engineering 3) Mechatronics

Level

PG:1)Engg. Management 2)CAMDA 3)Manufacturing Engg. 4)Nuclear Engg.

1st Year of approval by the Council :

UG: Mechanical Engineering - 1993, Industrial & Production Engineering - 1993, Mechatronics-2006

PG: Engineering Management - 1993, Computer Aided Mechanical Design and Analysis(CAMDA) - 2003, Manufacturing Engg. - 2004, Nuclear Engg. - 2007

Year wise Sanctioned Intake

		2010-2011	2009-2010	2008-2009
UG:	Mechanical	240	240	240
	Industrial & Prodn	40	40	40
	Mechatronics	60	60	60
PG:	Engg. Management	18	18	18
	CAMDA	18	18	18
	Manufacturing Engg.	18	18	18
	Nuclear Engg.	18	18	18

Year wise Actual Admissions

		2010-2011	2009-2010	2008-2009
UG :	Mechanical	200	180	180
	Industrial & Prodn	40	40	40
	Mechatronics	60	60	60
PG:	Engg. Management	18	7	1
	CAMDA	18	18	18
	Manufacturing Engg.	18	18	2
	Nuclear Engg.	8	Nil	1

Cut off marks (Rank in UGET examination) – General quota

		2010-2011	2009-2010	2008-2009
	Mechanical	2969	3546	3302
	Industrial & Prodn	5469	10515	5726
UG :	Mechatronics	4087	5904	4368
	Engg. Management	Not Applicable	Not Applicable	Not Applicable
	CAMDA	27	Not Applicable	20
	Manufacturing Engg.	47	49	Not Applicable
PG:	Nuclear Engg.	Not Applicable	Not Applicable	Not Applicable

% Students passed with Distinction

		2010	2009	2008
	Mechanical	21	24	24
UG :	Industrial & Prodn	25	32	15
	Mechatronics	Not Applicable	Not Applicable	9
	Engg. Management	100	No candidates	100
PG:	CAMDA	47	47	36
	Manufacturing Engg.	80	100	100
	Nuclear Engg.	100	No candidates	100

% Students passed with First Class

		2010-2011	2009-2010	2008-2009
	Mechanical	60	61	66
UG :	Industrial & Prodn	83	60	56
	Mechatronics	Not Applicable	Not Applicable	80
	Engg. Management	Nil	No candidates	Nil

PG:	CAMDA	54	53	64
	Manufacturing Engg.	20	Nil	Nil
	Nuclear Engg.	Nil	No candidates	Nil
Students Placed (Number of offers)		2009-10	2008-09	2007-08
	Mechanical	135	152	172
UG:	Industrial & Prodn	40	24	33
		36	Not Applicable	Not Applicable
	Mechatronics			
PG:			Data is not available	
Average Pay package, Rs./Year		2009-10	2008-09	2007-08
		3.3 Lacs	3.4 Lacs	3.2 Lacs
Students opted for Higher Studies		2009-10	2008-09	2007-08
			Data is not available	
Accreditation Status of the course				
UG :	(1)Mechanical Engineering: 5 years(from 2007), (2) Industrial & Production Engg.:3 Years(from 2007),Due for Accreditation (3)Mechatronics - Yet do be done			
PG:	(1)Engg. Management (2)CAMDA (3)Manufacturing Engg.- Applying for Accreditation (4)Nuclear Engg. - Yet to be done			
Doctoral Courses	Yes			
Foreign Collaborations, if any :	Nil			
Professional Society Memberships :	Institution Engineers (India), Indian Society for Technical Education,Akshay Urja Club			
Professional activities: (2008-2010)	Conducted 3 National Conferences in the Department in the past three years.			
Consultancy activities	Nil			
	2008: 1)Rs. 1 Lakh research grant from Cummins India Limited, Pune for the project "Effect of temperature on the fatigue life of material of aluminum pistons"			

Grants fetched

2010: 1)Rs. 2,09,000 from DST(TBI),MIT,Manipal for the research project title "Development of solar powered refrigerator for vaccine storage in rural settingd". 3)Rs.10 Lacs Research grant from MMRDC (Manipal Multi Disciplinary Research Centre) for research project "Development of Bio degradable natural fiber composite from locally available materials" 4)Rs.10 Lacs Research grant from MMRDC (Manipal Multi Disciplinary Research Centre) for research project titled "Fundamental study of the use of water and environmentally sustainable water based lubricants in multiple action Grooved Journal Bearings"

Departmental Achievements

1)Faculty Publications:2008:International Journal-8, National Journal-1,International Conference-6, National Conference-14.**2009:**International Journal-13, National Journal-1,International Conference-11, National Conference-12.**2010:**International Journal-3, National Journal-1,International Conference-8, National Conference-3 **2)Students Activities:**Students designed, developed Formula type car called "FORMULA MANIPAL" and participated in the internationa competitions in 2008,2009,2010. All terrain vehicles were made by Team Manipal Racing in 2009 & 2010.SAE Baja Team designed an ATV for an event in South Africa in 2009.

Distinguished Alumni

Every month, the distinguished alumnus profile is published in the Manipal University Website

Printing and Media Engg

Course:

Level UG :B.E. in Printing Technology

PG : M.Tech in Printing and Media Technology

1st Year of approval by the Council :

UG : 1992

PG : 2008

Year wise Sanctioned Intake

	2010-2011	2009-2010	2008-2009
--	-----------	-----------	-----------

UG :	60	60	60
------	----	----	----

PG :	18	18	18
------	----	----	----

Year wise Actual Admissions

	2010-2011	2009-2010	2008-2009
--	-----------	-----------	-----------

UG :	57	23	61
------	----	----	----

PG :	18	5	5
------	----	---	---

Cut off marks – General quota

	2010-2011	2009-2010	2008-2009
--	-----------	-----------	-----------

UG :	7424	17889	14814
------	------	-------	-------

PG :	18	-	-
------	----	---	---

% Students passed with Distinction

	2010	2009	2008
--	------	------	------

UG :	6	3	5
------	---	---	---

PG :	01	-	-
------	----	---	---

% Students passed with First Class

	2010	2009	2008
--	------	------	------

UG :	19	22	17
------	----	----	----

PG :	01	-	-
------	----	---	---

Students Placed

	2009-10	2008-09	2007-08
--	---------	---------	---------

UG :	17	28	17
------	----	----	----

PG :	NA	NA	NA
Average Pay package, Rs./Year	2009-10	2008-09	2007-08
UG & PG :	2.7 lpa	2.9 lpa	2.6 lpa
Students opted for Higher Studies	2009-10	2008-09	2007-08
UG :	4	4	4

Accreditation Status of the course

UG :	NBA accreditation for 5 yrs, 2007-2012
PG :	NA (with AICTE approval the course was started in 2008 after the accreditation in March 2007)
Doctoral Courses :	nil
Foreign Collaborations, if any	1. Collaboration with Chemnitz University of Technology, Germany for Double Degree Programme, Student and Faculty Exchange and Joint Research projects. 2. Collaboration with Koenig & Bauer AG (KBA), Germany for the joint project " Indo-German Printing Center".
Professional Society Memberships	IARIGAI, GATF and FTA
Professional activities	Conferences, Workshops, Seminars, Guest lectures, Industrial Visits & tours
Consultancy activities	Color Measurement & Management and Quality Testing
Grants fetched	Grant of Rs 300000/- IFRA Germany in Collaboration with Chemnitz University of Technology for the Indo-German project " Establishment of New Newspaper Printing Houses - is standardization possible?"
Departmental Achievements	100% placement Extensive collaborations with foreign universities and industries
Distinguished Alumni	Mr. Gautam Pai, MD, Manipal Press Ltd, Mr. Shashiranjana, Vice-President, Commercial Printing Division, Manipal Press Ltd., Mr Upendra Nayak, Plant Head, Times of India, Iroli, Mumbai, Mr. Sanjeev Sharma, Manager Production, R.R. Donnelley, Chennai, Ms. Lona Priya, Senior Quality Assurance Engg, EFI, Bangalore, Mr. Raghavendra Bhat, Production Incharge, Masar Printing and Publishing, Dubai, Mr. Arvind Mallya, Senior Manager, Times of India, Bangalore

13 . Name of Director: Dr Kumkum Garg

Designation : Director

Manipal Institute of Technology

Date of Joining the Institution : 04/08/2010

Qualifications with Class/Grade	UG : B.E (I Hons)	PG : M.E (I Rank)	PhD
Total Experience in Years	Teaching :34	Industry :02	Research :36
Papers Published (numbers)	National : 56		International
Papers Presented in Conferences (numbers)	National :59		International : 18
PhD Guide? Give field & University	Field : Computer Science & Technology		University : IIT, Roorkee
PhDs / Projects Guided	PhDs :8		Projects at Masters level



Books Published / IPRs/ Patents :1

Professional Memberships : 1. Senior Member IEEE 2. Fellow IE (I), 3. Life Member ISTE, ISCEE

Consultancy Activities : Uttaranchal Govt., Ministry of Information Technology, Govt of India, AICTE, MHRD

Awards : 1. Commonwealth Scholarship (leading to Ph.D from British Council, UK (1981-84)
 2. Apple Distinguished Educator Award Apple Systems, USA for commitment to the promise of education in the class room and beyond (2006)

Grants fetched : Computer Science & Technology, IIT, Roorkee

Interaction with Professional Institutions : All lits, NITs, delhi University

Department wise faculty Biodata

[Aeronautical & Automobile
Engineering](#)

[Biomedical](#)

[Biotechnology](#)

[Chemical](#)

[Civil](#)

[Computer Science & Engg.](#)

[Electrical & Electronics](#)

[Electronics & Communication](#)

[Humanities & Social Sciences](#)

[Information & Communication](#)

[Instrumentation and Control](#)

[Mathematics](#)

[MCA](#)

[Mechanical and Manufacturing](#)

[Physics](#)

[Printing & media](#)

14 Admission quota#

Entrance test / admission criteria -- Admission on the basis of rank obtained in the all India EPSI National

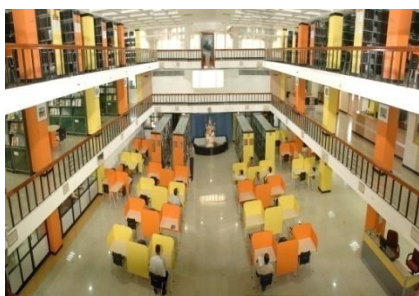
Admission Test-(ENAT-2011)

Cut off / last candidate admitted		2009-10		2008-09	
	2010-11 7428	24097		14814	
Fees in rupees		2009-10		2008-09	
	2010-11 1,53,000	1,53,000		1,34,000	
Number of Fee Waivers offered		2009-10	73	2008-09	101
	2010-11 128				
Admission Calendar	Last for receipt of application	BE :15/3/2011		M Tech :10/5/2011	
PIO quota		Yes			

15 Infrastructural information^

Classroom/Tutorial Room facilities
134 Class rooms and 61 Tutorial rooms





The nerve centre of any educational institution is its library, where the books/literature that the institution makes available to its students are stored. The institute has an up to date central library housed in a separate newly extended building with a total area of about 70,000 sq ft. The library is fully air-conditioned with a seating capacity of about 800. MIT central library has a number of technical books, Periodicals, video films, Indian standards and general magazines and other publications and is open to faculty and regular students of the institute and also to other with the written permission from the director. The institute has always a generous budget for the up gradation of the library and MIT library today has been one of the best libraries in the country.

The Library consists of the following sections:1. Lending Section2. Reference Section 3. Text Book Section 4. Periodicals Section 5. Information Center / Digital Library 6. Photocopying Section 7. Book Bank Section 8. Individual and Group study Halls 9. Acquisition and Technical Section

Library facilities



Literature Collection and statistics of the Library (as on 31-03-2010)

Total Number of books	93173
Total number of books added during 2009-10	3825
Expenditure for books during 2009-10	24,45,651
Total expenditure for books	3,21,42,668
Total number of journals subscribed during 2008-09	225
Expenditure for journals during 2009-10	22,02,883
Total expenditure for journals	2,45,08,057

Total number of online journals subscribed during 2009-10	1140
Expenditure for online Journals during 2009-10	40,72,090
Total expenditure for online journals	1,52,90,488
Total bound volumes	10309
Total number of book bank books	7210
Total video films	764
Total audio cassettes	48
Total number of computer based tutorials	350

Library automation:

Central library, MIT is fully automated using EASYLIB software. Different databases have been developed for books, bound volumes, video cassettes, CD's etc. Online Public Access Catalog (OPAC) is available for the users. The internet enabled catalogue (E-PAC) can be accessed by the staff and students from their respective department or hostels using internet. As all the constituent institutes of Manipal University are connected to the same server a user of MIT library can access the database of MIM, MIC, KMC (Mangalore & Manipal), & WAGSHA libraries. MIT library has taken the DELNET membership. One can send a request for the photocopy of the journal articles or few pages of text books to DELNET. The same will be sent by DELNET in a week or so.

MIT Library has become a member of INDEST consortium. Through this library has online access to

1. ASME digital library
2. ASCE digital library
3. ACM digital library
4. IEL Online
5. BIS (Standard on intranet)
6. Science Direct
7. Springer Link

Library has become digital now by having access to online journals, standards etc.

Library Web Page

To access the online products links are given in the library web page. <http://mymanipal> is the intranet of Manipal University in which a hyperlink is given to MIT library.

Central Computing Facility

The CCf is a computing facility available to all the students and staff of MIT, Manipal. It is fully air-conditioned and equipped with the state of the art computers and peripherals available on the date. The CCf is headed by a Professor in charge and has a System



state-of-the-art computers and peripherals available as on the date. The CCF is headed by a Professor in-charge and has a System Administrator, System Analyst, Programmer, Technician and supporting staff. The usage of the CCF is managed by a user committee, of which the members are drawn from all the departments. There are 6 laboratories of 30/40 P-IV computers each and E-classroom with TFTs. The PG and research lab has 30 workstations with dual Xeon processors, 22" flat monitors and laser colour printers. All the computers have internet connectivity and can access the required software from very powerful servers. Some of the important software available are MATLAB/SIMULINK with tool boxes, EDA tools, Lab VIEW, Rational Rose, Pro Engineer, AutoCAD, ORACLE, ArchiCAD, and Cluster Management Software.

Laboratory details



S.No.	Name of the course/ Department	LAB	Total Area of lab/workshop (Sq.m)	Major equipment
1	Workshop	Carpentry/Pattern Shop	874	Gear Hobbing Centreless Grinding Machines
		Fitting/Machine Shop, Painting Sheet, Metal Workshop	1201	
		Smithy & Foundry	561	
		Total	2642	
		Survey lab	151	Consists equipments to conduct field measurements ,
		Hydraulic Machine Lab	297	Consists of major equipments like pumps & turbines
		Strength of Materials Lab	195	Lab consists of equipments to measure





2

Civil Engg.

Civil Engg. Lab	277	It consists of equipments to measure the properties of cement, concrete, aggregates, bricks, bitumen etc.
Soil Mechanic Lab	303	It consists of equipments to measure the properties of soil .
Environmental Lab	272	It consists of equipments to testing quality of water and sewage.
Structures Lab/P G Project Lab	222	Universal Testing machines, Non-destructive testing equipments
Geology Lab	277	Laboratory has various types of rocks and models
Irrigation & Fluid Mechanic Lab	604	Consists of equipments for flow measurement
Computer Lab	112	Consists of various software packages for analysis and design of structures, for preperation of contour maps and plans, construction scheduling, drafting package.
Total	2710	
	111	i) HP Proliant ML 150G5 Server -1No. (ii) HP Compaq dx2480 Core 2 duo E4600 processor- 33 Nos
Network Technology Lab	99	Computer - Intel core2 dual processor 34Nos.
Information Security Lab		
Database Systems Lab	110	Computers:i. HP dx 2255 Micro tower base DT PC-30 No's ii.HPCompaq dx 2480 -4 No's
Operating Systems Lab	123	Server :Wipro Net Power intel P4 based server -2



3	Computer Science & Engg.	Project Lab	107	Computers i. HP dx 2255 Micro tower base DT PC - 20 Nos.		
		Digital Systems Lab	138	Minicomp Prodigy 2000 Intel Pentium III Windows 98 software with CD License-1		
		Programming Lab	100	Computers- P4 20 GHz - 35 Nos.		
		Software Engineering Lab	108	Computers : 2000 Net Server PIII - 2 Nos. HP TC P IV		
		PG and Research Lab	123	HP Proliant ML 150 Server- 1No		
		Total	1019			
		Automation Laboratory	136	CNC Trainer machines, Robot, Mechatronics Kit, PLC Kit, CNC softwares, Kistler Dynamometer		
				UG and PG CAD Lab Classes, Doctoral Research Activities		
		4	Mechanical Engineering	CAD Lab	195	
				I.C Engine lab	485.75	
Heat transfer and vibration lab	66					
Metrology lab	171					
TOTAL	1053.75					
		Circuits & Measurements Lab	196	III Semester Circuits & Measurements Lab		
		Integrated Electronics lab	193	IV Semester Analog System Design Lab V semester Digital System Design lab		
		Electrical Machines Lab	334	IV Semester Electrical Machinery Lab-I V Semester Electrical Machinery Lab-II		
	Electrical and					

5	Electronics Engineering	Embedded Systems and Micro Controller lab	129	VI semester Micro Ccontroller lab I Semester PG Lab (PESC) II semester PG Lab (EMAL)
		Power Electronics & Drives lab	195	VII Semester Power Electronics Lab II Semester PG Lab (PESC)
		Lighting Measurements Lab	195	I Semester PG Lab (EMAL)
		TOTAL	1242	
		Power electronics Lab	114.95	Equipped with set up for power electronics lab.
		Electronics Lab I	105.73	Has facility to conduct circuit and devices lab courses for 2 nd year Undergraduate program.
		Electronics Lab II	87.79	Has facility to conduct digital circuit labs for 2nd & 3rd year UG students
6	Electronics & Communication Engineering	Project Lab	87.79	Lab has necessary equipment for students to do project work.
		Communication Lab	105.73	Has facility for conducting Basic and Advanced communication experiments for 3 rd and 4 th year UG students. Lab is equipped with Digital communication and microwave experiment set up.
		Fiber Optical Lab	38.40	Equipped with fiber optic kits & benches.
		Microprocessor & Microc	119.41	Has necessary facility for experiment & research in Microprocessor & Microcontroller systems.



Computer Lab 1	119.06	Has necessary tools like P Spice, Matlab Etc for software labs of UG programs
VLSI & DSP Lab	119.17	Has necessary Hardware & Software for VLSI & DSP experiments. The lab has FPGA kits & DSP kits.
Computer Lab 2	118.90	Provides Computing facility for students and also for faculty.
PG Lab	77.26	Has equipped with advanced digital communication kit & cadence design Tool
MEMS Lab	86.10	Has Silvaco and Intellisuite software for device characterisation.
TOTAL	1180.29	
Imaging Techniques Lab	21.13	Vertical Gallery Camera, Contact Printer, Plate Exposure Unit, Automatic Plate Processor.
Screen printing lab	36.56	Screens and printing tables, Plate processor and exposing machine, Compressor.
Quality Testing Lab	31.35	Paper Porosity Tester, Smoothness Tester, GSM Tester, Ash Content Tester, Paper Brightness Tester, Print Color Appearance Tester, Digital Dial Model Opacity Meter, Tear Resistance Tester, Digital Viscometer, pH & Conductivity Tester, Folding Endurance Tester, Tensile Strength Tester, Cobb sizing Tester, Heater,

/

printing technology

Packaging Lab & Print Finishing and Converting Lab	86.52	Print Graph Die Cutting Machine, Pack Test Mini Carton Compression Tester, Ink Rub Resistance Tester, Print Graph Single Knife Guillotine Trimmer, Print Graph Wire Sticking Machine, Nipping Press, Lamination, Spiral Binding Machine, Book Drilling Machine Punching Machine, Perforation Machine, Co-efficient Friction Tester, Drop Tester.
Printing Machine Lab	77.52	Demy size Offset Machine (HMT SOM 125),
Color Science Lab	37.52	Epson Stylus Pro 4000 A3 color Printer, HP 5500 42 inch Large Format Plotter, Gretag Macbeth IC Plate II,
TOTAL	290.6	
LAB - 1 DBMS LAB	125	dx220
LAB - 2 Computer Network Lab	104	dx6120
LAB - 3 Advance Programming Lab	108	dx 2480
LAB-4 Project Lab	103	dx 2255, dx 6120, dx 220 & dx 7200
LAB-5 Software Lab	125	dx 2480
LAB-6 Wireless Lab	75	dx 2480 & dx 6120
LAB-7 Research Lab	75	dx 6120, dx 7200, HP 110, IBM & Zenith PC
TOTAL	715	

8

Information Technology

		Process Control	135 Sq.m	The lab is equipped with various process control stations like level, flow, pressure, temperature and multi process trainer with computer based real time control to understand the PID and other modes of controller action.
9	Instrumentation and Control Engineering	Control Systems lab	155 Sq.m	Tuning of controllers, Online monitoring and controlling operations, Real time simulation of process plants(temperature, level flow)
		(PC LAB &PLC Lab)		Developing the programs for real- time problems
		Space Engineering Lab		20 Computers with latest configuration
		Microprocessor & Microcontroller Lab	155	Advanced 8085 micro-processor ESA 85-2,
		Transducer Laboratory & Instrumentation Laboratory	135	Equipments for measuring physical quantities like displacement, speed, strain, Temperature.etc.
		Total	580	
	Biomedical Engineering	Biomedical Instrumentation Lab.	134.77	set-up for conducting EDC Lab. AEC Lab. Biomedical Instrumentation lab. Biomedical instrumentation Lab. ted Circuit system lab.
		Microcontroller and Microprocessor Lab.	139.81	Set-up for conducting Digital Electronics lab. Microcontroller lab. Minor project, Biomedical Equipment lab.
10				

		Biomedical Computing Lab.	148.64	Set-up for conducting Image processing lab. Signal processing lab. Project lab. (computers)
		post graduate research lab.	134.77	exclusively for the benefit of the PG students and research activity
		TOTAL	557.99	
		Experimental methods in chemical engineering	327	Gas analyses apparatuses, Chemito Gas Chromatography ,
		Instrumental Analysis Lab.	412	Mass Transfer Lab.
		Chemical Reaction Engg. & Process Control Lab	279	Reaction Engg. & Process Dynamics Lab.
11	Chemical Engg.	Bio-Chemical Lab	279	Bio-Chemical Lab
		Heat Transfer Lab.	288	Heat Transfer Lab.
		FFSO Lab.	139	Momentum Transfer and Mechanical Operations Lab.
		Computer Lab/ Process Simulation Lab	139	1. Software & CD (150 Max) 2. Aspen Plus Univ. Package for Process Engg. 150 Max Simultaneous users. 3. Chemcad simulation software including CC
		Total	1863sq.m	
		Engg.Chem.Lab.	195	Working Tables
		Engg.chem.lab.	195	Reagent Shelves
		Org.Chem.Lab.	133	Fuming Cupboards
12	Chemistry Department	Instrumental Lab	133	Digital Colorimeter
		Project Lab	168	Fourier Transform

		Lab-6	132	Electronic Balance
		TOTAL	956	
		PHYSICS LAB 1	277	Optics and Modern Physics
		PHYSICS LAB 2	67	Sophisticated instruments: X-ray diffractometer,
		PHYSICS LAB 3	167	Engineering Physics
		TOTAL	511	
		Biochemistry	120	Gel Documentation System (Ultralum, USA)
		Microbiology	120	Microscope – Binocular (Olympus, New Delhi)
		Cell and Molecular Biology	110	Gradient Thermocycler (Eppendorf, Germany) Microcentrifuge
		Unit Operations	120	Fluidized bed, packed bed, venturi meter, orifice meter, Flow through pipes
		Fermentation Engineering	110	Refrigerated Centrifuge (Plastocraft, B'lore)
		Computational Techniques in Downstream Processing	50	TURBO C++ Software Sun Fire server-01
		Bioprocess and Bioreaction Engineering	110	HPLC System (Shimadzu, Japan)
				Orbital Shaking Incubator (Techlab, Chennai)
14	Biotechnology	Bioinformatics	50	ACCELRYDS DRUG DESIGN 1.7
		Process Control	120	Dynamics of First and second order systems, Level, flow and temperature
		Modeling and Simulation in Bioprocess Engineering	50	Modeling and Simulation of Chemostat, fed-batch reactor
		Bioprocess Engineering lab	110	Orbital Shaking Incubator Open Air Platform Shaker,

		Bioinformatics lab	50	SYBYL SURFLEX – DOCK 2.005
		Preparation room	34	Water Purification System (Millipore, B'lore), Fume cupboard,
		Sterile room	6	Autoclave, Hot Air Oven (Rotek, Mumbai)
		Store room	28	Glassware and chemicals
		Cold room	6	Walk-in cold chamber (Techlab, Chennai)
		Total	1314	
15	CCF	Lab-1	285	85 PIV Computers
		Lab-2	97	30 PIV Computers
		Lab-3	113	30 PIV Computers
		Lab-4	114	30 PIV Computers
		PG-Lab	114	38 PIV Computers
		TOTAL	723	
16	MCA	Computing lab - 1	101	HP PRO 3090 MT - Intel Core 2 Duo-2.8 GHZ/ 2 GB RAM/ 250 GB SATA HDD(with wide TFT monitor) - (30 Nos)
		Computing lab - 2	110	HP Compaq dx2255, AMD Athlon, 64x2 Dual Core Processor 3800+ 2.01GHz, 896MB RAM, 80 GB
		TOTAL	211	
		Aerodynamics and Propulsion Lab	351	Axial Flow fan Test rig
		Aircraft Systems Lab	192	Flight Simulator
		Aircraft Maintenance and Fabrication Lab	97	Pneumatic Rivet Gun
		Avionics Lab	49	PCI 1553 - 1D Inter face

17	Aeronautical & Automobile Engg.	Automotive EnginesLab	125	TATA 1210 Engine Assembly For Dismantling
		Automotive Transmission Lab	294	Electrical Demo Bench Assembly And Fuel Supply System
		Automotive Machine shop	147	Crank Shaft Grinding Machine
		Vehicle Testing Lab	84	Poullation Test Machinery AVL 437C Smoke Meter
		TOTAL	1339	
		GRAND TOTAL	18740	

Auditorium / Seminar Halls / Amphi

Yes

2 AC SeminarHalls with 250 capacity , 1 Seminar Hall 150 Capacity



Open air Auditorium with 3000 capacity



Cafeteria

Yes



Indoor Sports facilities
Shuttle ball badminton court, Table
Tennis



Outdoor Sports facilities
Football, Hockey, Cricket Grounds,
Volley ball Basket Ball court 2 Nos.



Gymnasium facilities Yes



Facilities for disabled Yes



Any other facilities
Swimming pool
Internet facilities



Food court



16 Boys Hostel Yes
Accommodation available for 4900
boys with mess facilities



Girls Hostel Yes Accommodation for available for 1800 girls with mess facilities



Medical & other Facilities at Hostel Manipal University has its own Hospital and the student are provided with medicare facilities



17 Academic Sessions

Examination system, Year / Sem

Semester Scheme

Period of declaration of results

Ten days after the examination

18 Counseling / Mentoring

Career Counseling	Yes
Medical facilities	Yes
Student Insurance	No

19 Students Activity Body

Cultural activities	Students council and other student clubs will conduct number of collegelevel and inter college cultural fests competitions etc.,
Sports activities	Department of physical education will conduct inter class, inter college and inter University sports meets. Students can participate in the inter University competitions.
Literary activities	Literary clubs like Music and Fine arts club etc., will hold the activities through out the year.
Magazine / Newsletter	Technical Review will be published every year and College magazine will also be published yearly.
Technical activities / TechFest	Tech fest called TECH TATVA will be conducted every year . Engineering students all over the country will participate.
Industrial Visits / Tours	Department wise Industrial Tours /visits will be conducted fot students

Activities of Alumni Cell, Manipal Institute of Technology, Manipal

Alumni cell, M.I.T Manipal, established in the year 2004 with an Associate Director heading the cell. Since then it has formulated, initiated and implemented several programs for improving the alumni – institute relationship and has played a key role in the overall development of the organization. Some of the major activities of the cell are listed below

Registration to alumni database: M.I.T alumni cell encourages its alumni to register for the alumni database by online registration in the University website www.manipal.edu. Continuous rapport with alumni through email and other communication media has resulted in the significant increase in the alumni database recently. As on today about 4450 alumni have registered in our database and this number is increasing steadily every month.

Alumni e-Newsletter: It is a quarterly publication from alumni cell, focusing on the new initiatives / developments / technical activities / placement prospects in the institution and achievements of the alumni / faculty / institution. This will be sent to all the listed alumni through e-mail regularly, anticipating more effective networking of MIT alumni, spread globally and improving alumni relations.

Distinguished alumnus profile: The profiles of the distinguished alumni who have achieved success in their professional career are displayed in the University website www.manipal.edu every month. The main objective of this is to motivate the students to achieve higher goals in their respective field and also for recognizing the achievements of alumni.

Annual Alumni meet and Silver union meet: Annual alumni meet of all institutions under Manipal University is organized in December every year. This will give an opportunity for alumni of various institutions to interact with each other and share their views on a common platform. This will be followed by the silver union of respective batches in the concerned institutions. M.I.T alumni cell organized the silver union of 1984 passed out batch on December 20, 2009. Since both these functions are conducted together, it attracts large number of alumni to participate and meet their teachers, friends and batch mates.

Regional alumni associations: M.I.T alumni cell encourages and supports the formation of regional alumni cell at various places in India and abroad and acts like a nodal agency in coordinating the programs of these associations and interaction among these associations. Already 9 such associations are operating at various centres and are interacting with the parent alumni cell in conducting alumni meets and other functions at their end.

Involvement of alumni in the academic environment of the institute: M.I.T alumni cell encourages its alumni to give guest lectures / seminars and conduct workshops for the benefit of large number of its students pursuing their undergraduate and post graduate education. Every year two such programs are conducted by the alumni cell for the benefit of students.

Alumni ID card: M.I.T alumni cell is distributing the alumni ID card on demand for its alumni. This ID card entails several benefits including discount in the registration fee for the conferences organized by M.I.T, subscription to M.I.T digital library, discount in the hotel booking in Manipal and many other.

Alumni activities

Dr. Jagannath K
Associate Director (Alumni Affairs)
Professor of Mechanical and Manufacturing Engg.,
MIT, Manipal – 576104, Karnataka, India
Office e-mail ID : adalumni.mit@manipal.edu
Personal e-mail ID : jagan.korody@manipal.edu and jagankorody@yahoo.com
Tel.(Office) : +91 820 2924027
Tel.(Residence) : +91 820 2571710

20 Name of the Information Officer for RTI : Dr Raghunandan. K

Designation Associate Director (PS & PR)
Phone number with STD code 0820-2925562 0820-2925563
FAX number with STD code 0820-2570171
Email office.mit@manipal.edu;raghu.bhat@manipal.edu

CAY=Current Academic Year
*Repeat this template for each department / staff.
#Repeat this template for additional quota, if any.
^Add photographs